

# **Audition excerpts Orchestra Master**

## **Bass Trombone**

### **Solo Concerto:**

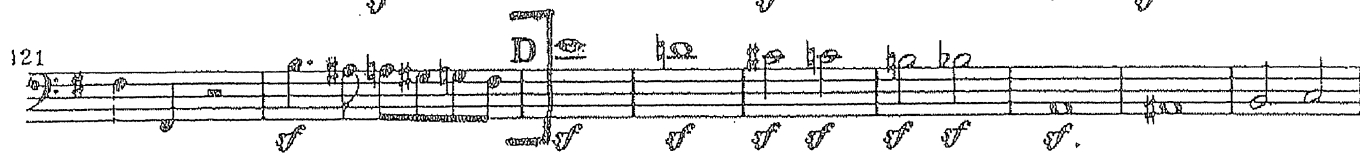
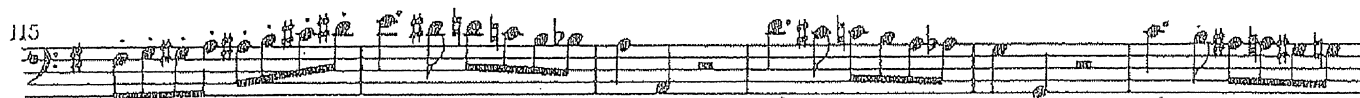
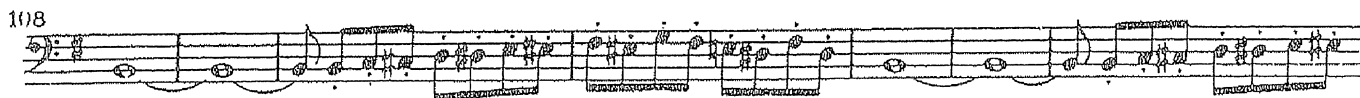
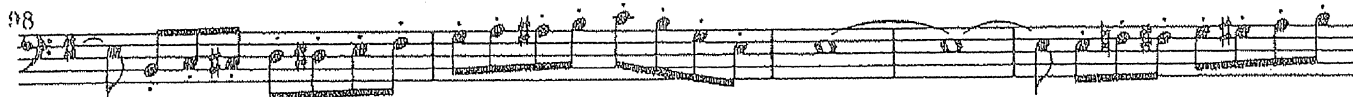
## **Lebedev Concerto in One Movement**



Gioacchino Rossini  
William Tell Overture

Bassposaune.

Allegro. (♩ = 108)



# HÁRY JÁNOS-SUITE

Trombone III

Zoltán Kodály

Alla marcia

IV

Poco meno mosso *gliss.* *f* *gliss.* *gliss.* *gliss.*

*gliss.* *pesante*

*f* *grandioso e marcatiss.*

*poco string.* *cresc.* *fff*

*lunga Pausa*

Robert Schumann

Symphony No. 3 in Eb Major, Op. 97

I-III tacent

Baß-Posaune

Feierlich IV

*pp* *Solo* *nach und nach stärker* *f* *f*

28 *Die Halben wie vorher die Viertel* *mf* *f*

## J. Haydn Die Schöpfung

Trombone basso

## 26. Chor und Terzett

Vivace

Musical score for Trombone basso, measures 5-33. The score is in bass clef with a key signature of one flat (B-flat). The tempo is marked 'Vivace'. The music consists of six staves of notation. Measure numbers 5, 10, 16, 21, 27, and 33 are indicated at the start of their respective staves. There are two first endings labeled 'A' and 'B' above the staves. The piece concludes with a double bar line and repeat signs.

Allegretto

## 28. Duett mit Chor

Musical score for Trombone basso, measures 291-321. The score is in bass clef with a key signature of one flat (B-flat). The tempo is marked 'Allegretto'. The music consists of four staves of notation. Measure numbers 291, 301, 311, and 321 are indicated at the start of their respective staves. There are two first endings labeled 'H' and 'I' above the staves. The piece concludes with a double bar line, a repeat sign, and the number '11'.

# Tannhäuser und der Sängerkrieg auf Wartburg.

## OUVERTURE.

Bass-Posaune (Trombone Bass).

Richard Wagner.

Andante maestoso. ( $\text{♩} = 50$ .)

32 Hobor

Chor

*f ff*

27 Allegro. ( $\text{♩} = 80$ .)

12 *Un poco rit. Tempo I.* 20 *Un poco rit.*

Bratsche

B 18 30 C 3